



FIXED GAP SHEARING APPLICATORS (All manufactured from STAINLESS STEEL)

The format of the following applicators may be used with the following test methods:
BS3900 D5 / ISO 2813, ASTM D3258, D3265.
Refer to relevant test method for correct applicator choice.



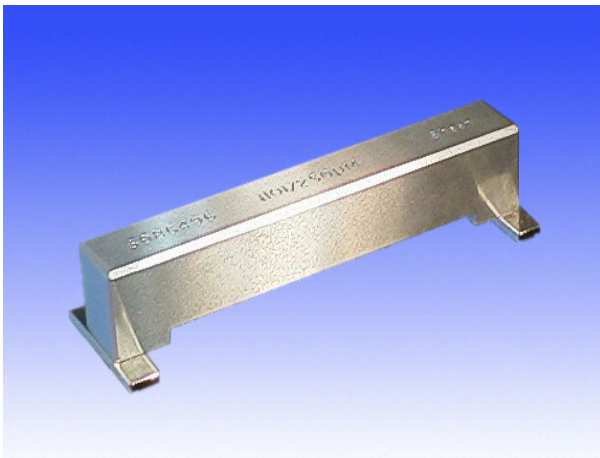
REF. 1100 'BIRD' TYPE APPLICATORS

These precision applicators are used in conjunction with paper, hiding power charts, plate glass or other smooth flat surfaces. They are simple, accurate production or quality control tools which require no adjustment. Available in two film widths as standard: 50 or 75mm

ORDERING

Ref. 1110/50: 50mm film width available with the following gap sizes:- 50,75,100,125,150,200um

Ref. 1100/75: 75mm film width available with the following gap sizes:- 50,75,100,125,150,200um



REF. 1101 BAR APPLICATORS

These applicators are designed for use with 100mm wide test panels. The removable guides allow accurate and reproducible draw downs for repetitive testing. Like the bird applicator above, the bar needs no adjustment and is supplied ready to use. Standard film width is 90mm.

ORDERING

Ref. 1101/90: Available with the following gap sizes:- 25,50,75,100,150,200,250um



REF. 1103/4 CUBE APPLICATORS

These small applicators have the benefit of two gaps machined into their working edges. They form very reproducible, parallel sided films, often used when comparing different samples. The Ref. 1103 is particularly suited for use with the BK range of drying time recorders.

ORDERING

Ref.1103: 25mm Cube applicator with film width 16mm. Two standard gaps: 37 and 75um.

Ref.1104: 50mm Cube applicator with film width 41mm. Two standard gaps: 50 and 100um.

REF. 1107 FOUR SIDED APPLICATOR

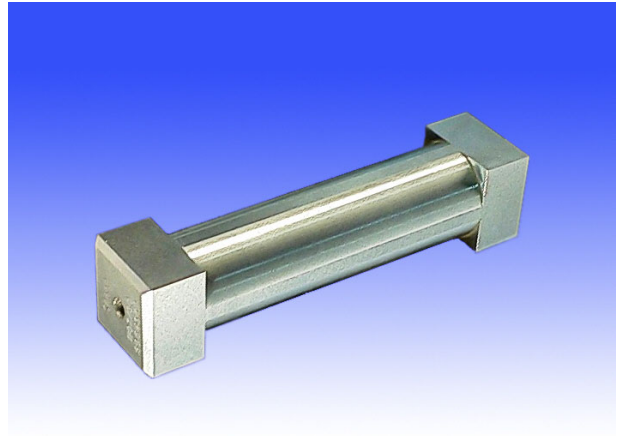
This applicator has the advantage of combining ease of use with 4 gap sizes in one unit. For best results it should only be used on solid substrates which are smooth. By simply rotating the applicator through 90° the next gap is placed onto the test surface.

Available in two film widths as standard: 60mm or 80mm.

ORDERING

Ref. 1107/60 60mm film width available in the following gap sizes: 30,60,90,120um.

Ref. 1107/80 80mm film width available in the following gap sizes: 30,60,90,120um.

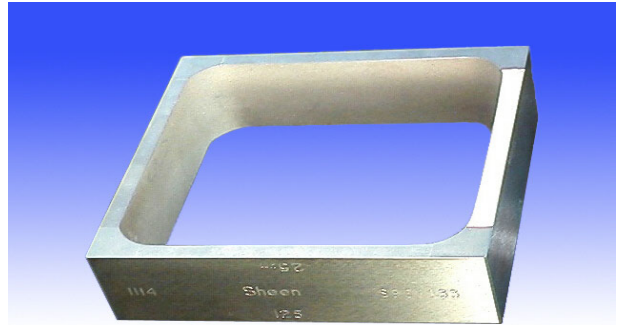


REF. 1114 MULTIFILM APPLICATORS

A very versatile applicator, giving the user a choice of 8 different film thicknesses in one unit. Simply select the appropriate gap, place the sample in the centre and draw down in the usual manner.

ORDERING

Ref. 1114: 76mm film width gap sizes of: 25,50,75,100,125,150,175,200um.



REF: 1108 SAG INDEX APPLICATORS

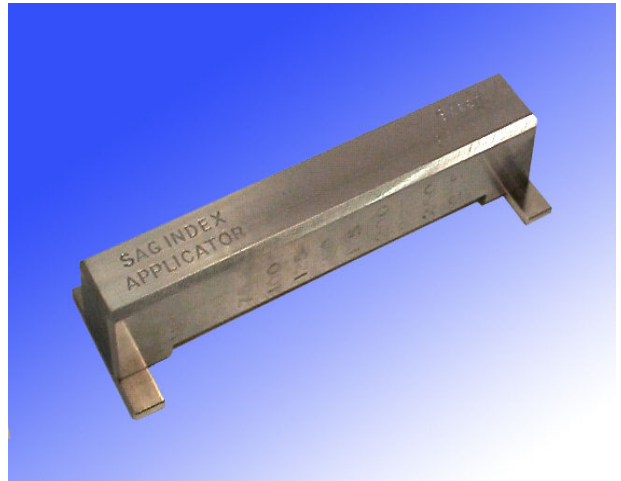
This gauge allows sag resistance of coating to be visually evaluated. It applies a series of 10 parallel tracks of the coating to the substrate. Each adjacent track is thicker than the last. This test panel is then held vertically. The sag index value is determined as being the first track which does not sag into the new one below (with the thickest at the bottom) The step interval between each track indicates a sag of 25%.

ORDERING

Ref. 1108/275: 89mm film width, step range 50-275um in 25um steps.

Ref. 1108/475: 89mm film width, step range 250-475um in 25um steps.

Ref. 1108/675: 89mm film width, step range 450-675um in 25um steps.



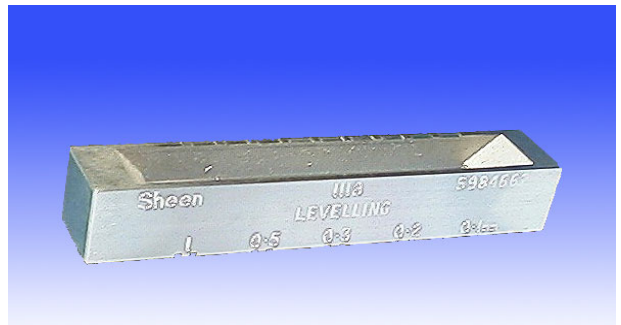
NOW CONFORMING TO BS ISO 16862

REF. 1118 SAGGING AND LEVELLING TESTER

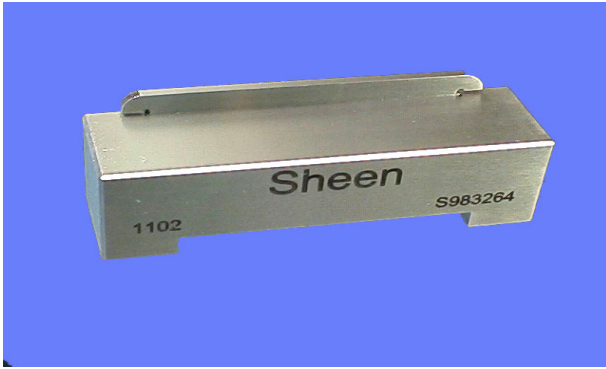
This applicator performs two tests. The sagging test is carried out as for Ref. 1108 (from 75 to 300um) but also incorporated is the levelling test. This test lays down parallel pairs of films which increase in thickness. Evaluation is made after drying. The coating is deemed to show good levelling if the gap between the films is very small.

ORDERING

Ref. 1118 – 80mm film width; 5 pairs of gaps for levelling assessment – 100,200,300,500, 1000um.



SPECIAL NON STANDARD WIDTHS OR GAP CLEARANCES AVAILABLE ON REQUEST

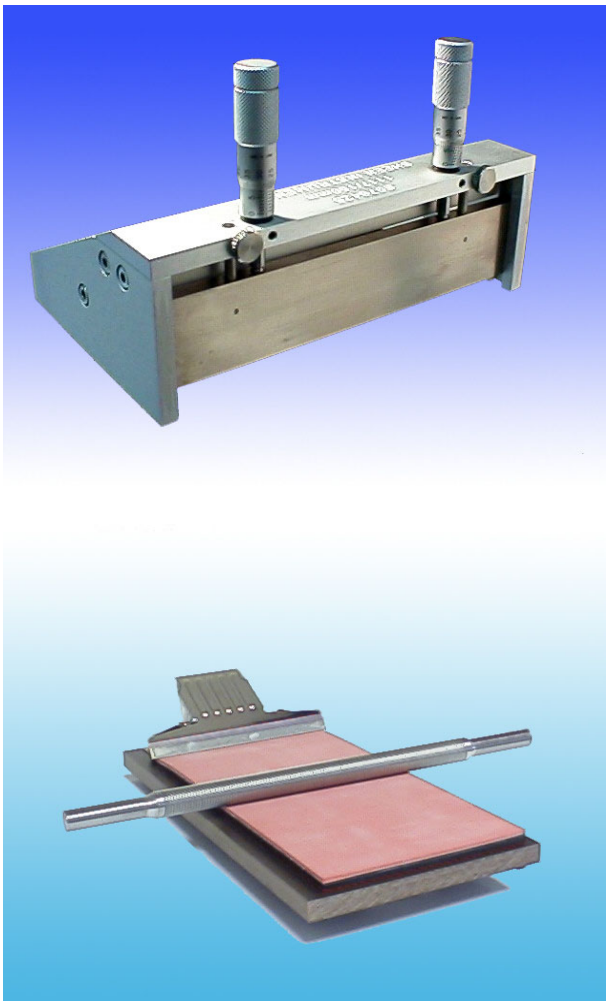


REF. 1102 ADJUSTABLE FILM APPLICATOR

With this applicator, a doctor blade is used. This does not shear the material under test so the resultant wet film thickness is much closer to the actual gap clearance. Two knurled screws on the applicator allow the gap to be set up to 6000um.

ORDERING

Ref. 1102: 76mm film width



REF. 1117 MICROMETER ADJUSTABLE FILM APPLICATOR

By using high precision micrometer adjustment, this applicator can be set from zero to 9000um (9mm) in increments of 10um. This applicator is ideally suited to research projects where small variations in film thickness need to be evaluated accurately.

ORDERING

Ref.1117/100 - 100mm film width

Ref.1117/150 - 150mm film width

Ref.1117/200 - 200mm film width

Ref.1117/250 - 250mm film width

Ref.1117/300 - 300mm film width

REF. 1120 WIRE BAR COATERS

These bars are ideal for the application of inks and coatings onto flexible materials such as paper, card, textiles, leather etc. The coating thickness applied is controlled by the area of the groove between the coils of wire. As the material levels a smooth uniform thickness is produced. Impression beds hold the substrate material firmly in place to ensure accurate drawdown.

ORDERING

Ref. 1120/18 – 18cm film width available in wet film thicknesses of 10, 15, 25, 35, 50, 75, 100, 125, 150, 200um.

Ref. 1120/25 – 25cm film width available in wet film thicknesses as above.

Ref. 1140 – These are designed for use with the Sheen Automatic Film Applicator and attachment kit.

Ref. 1120/18/Imp – Small impression bed – Bed size 11 x 18cm

Ref. 1120/25/Imp – Large impression bed – Bed size 22 x 34cm

NOTE After one year's use, it is recommended that the applicators are returned to us for service, and re-grinding if necessary. Please contact our Service Department for details.

(**N.B.** for mechanical draw down, please refer to our Automatic film applicator Ref. 1133N series of instruments, detailed in a separate data sheet).

Owing to continuous development, we reserve the right to introduce improvements and modify specifications without prior notice.

Sheen Instruments Ltd

Unit 4, St. Georges Ind. Est., Richmond Road, Kingston, KT2 5BQ England.

Tel: 020 8541 4333 Fax: 020 8549 3374 Intl.Tel: 44 20 8541 4333 Intl.Fax: 44 20 8549 3374

Internet : www.sheeninstruments.com Email: info@sheeninstruments.com